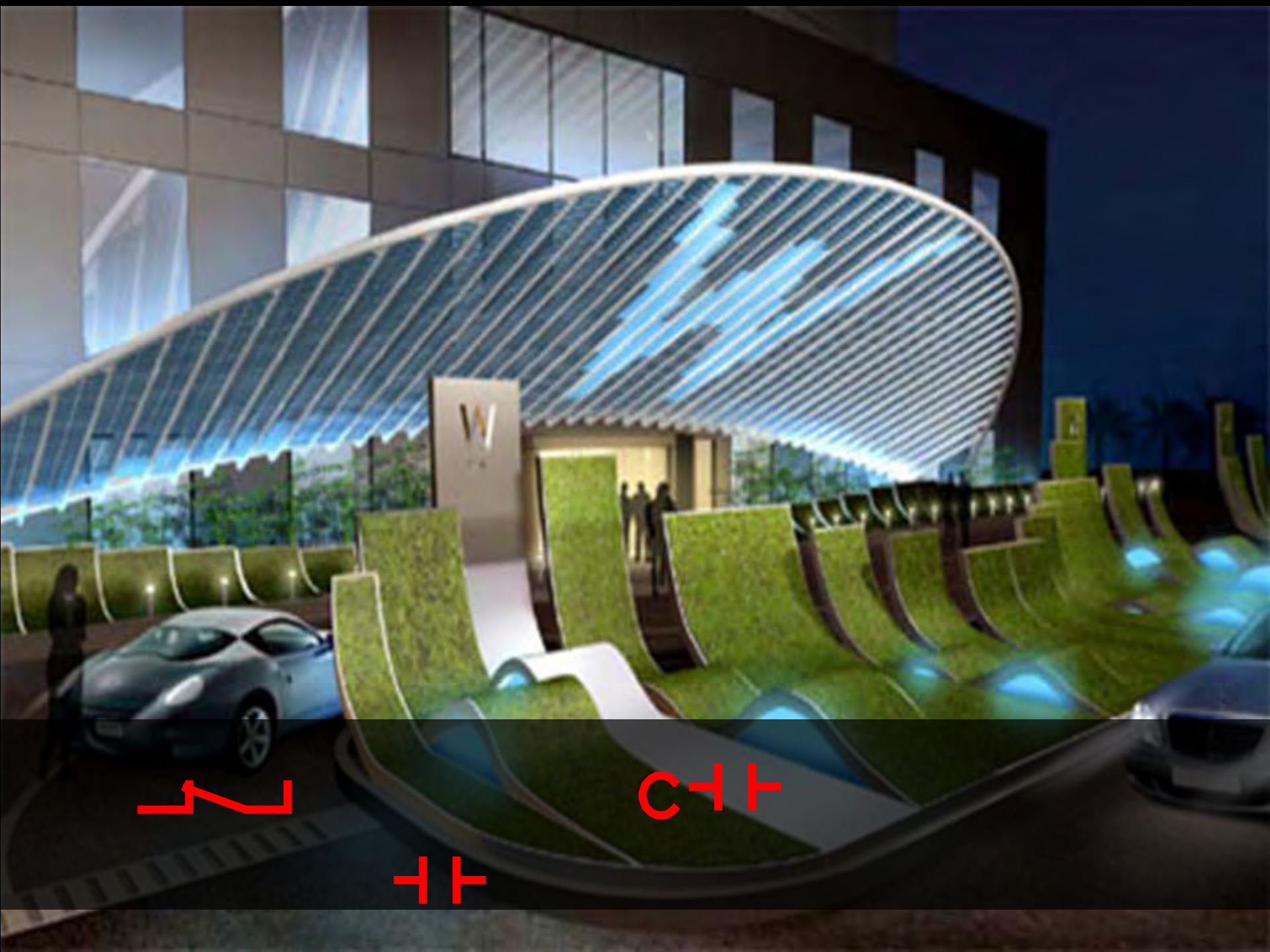


# BACK TO THE FUTURE

A red DeLorean car is shown from a rear perspective, driving away on a road that appears to be made of fire. The car is surrounded by bright blue and white lightning bolts that radiate outwards. The background is black, making the fire and lightning stand out prominently.

## *ABS 3 Preview*

**ALERTON®**



7

CIT

TT



**BACK**  
**TO THE FUTURE**

# Welcome Back to the Suite!



- ⊕ Envision for BACtalk
- ⊕ WEBtalk
- ⊕ VisualLogic®
- ⊕ BACtalk Builder

**ALERTON®**

- New VisualLogic® Enhancements
- New Reporting Engine
- New Trendlog Viewer
- New Licensing
- New Integrated Dashboard with design tool
- Tips on Selling/Upgrading to ABS 3
- Pricing

# *New VisualLogic Enhancements*

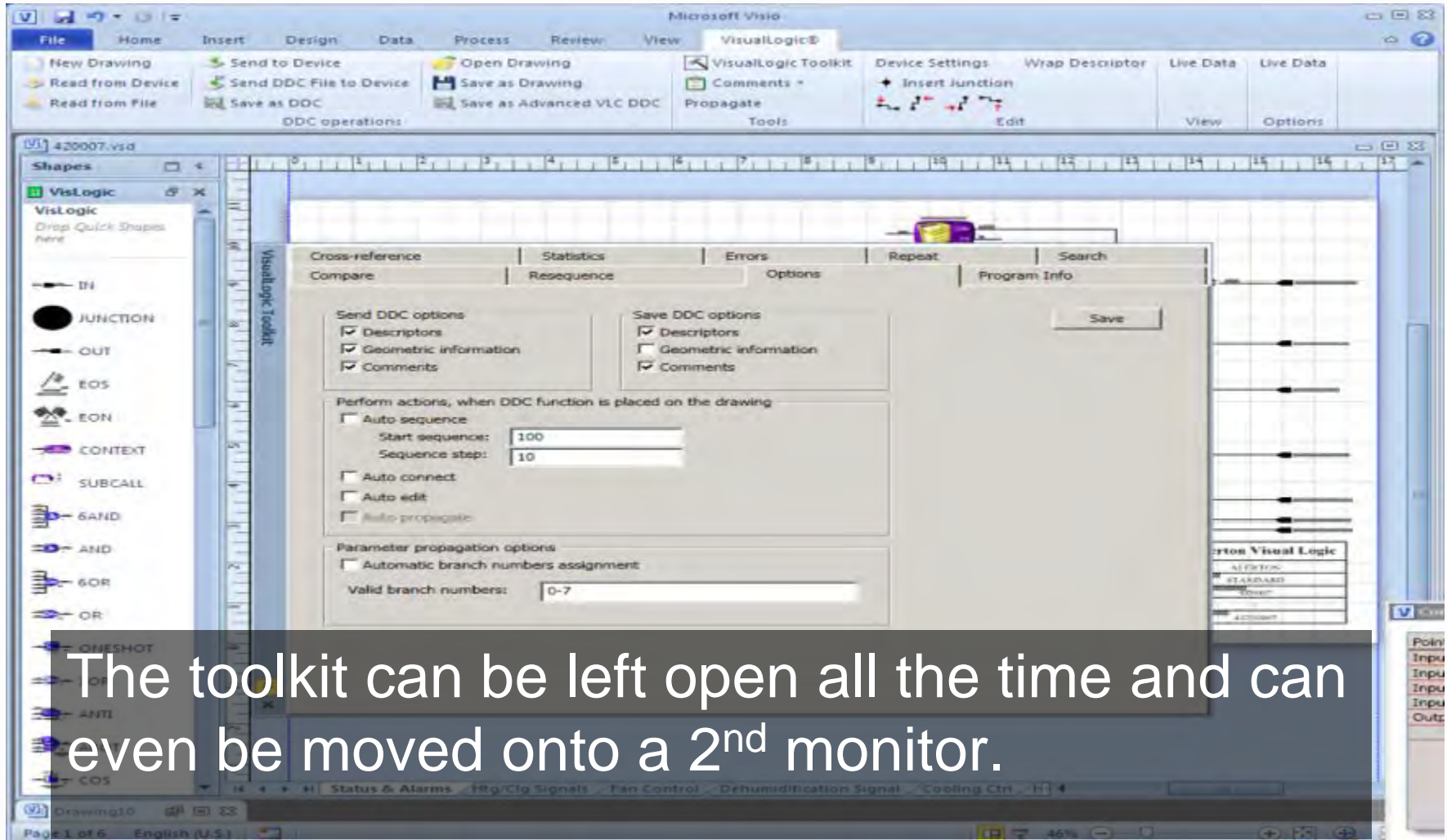
## **ALERTON<sup>®</sup>**

- *New DDC Toolkit*
- *New Compare DDC Function*
- *New Auto Sequence Function*
- *New Auto Edit DDC*

# **VisualLogic<sup>®</sup>**

v3.0

**We make buildings work.**



The toolkit can be left open all the time and can even be moved onto a 2<sup>nd</sup> monitor.



The screenshot displays the Microsoft Visio interface with the VisualLogic Toolkit open. The 'Compare' tab is active, showing a comparison between two drawings: 4ZD007.vsd and 4ZD006.vsd. The comparison table lists various sequences and their status (Equal or Different). The 'Generate Report' button is visible at the bottom of the comparison window.

4ZD007.vsd		4ZD006.vsd
Sequence:1050 (6-AND)	Equal	Sequence:1050 (6-AND)
Sequence:1060 (SELECT)	Equal	Sequence:1060 (SELECT)
Sequence:1070 (COMP)	Equal	Sequence:1070 (COMP)
Sequence:1080 (6-OR)	Equal	Sequence:1080 (6-OR)
Sequence:1090 (DOB)	Equal	Sequence:1090 (DOB)
Sequence:1100 (ANTI)	Equal	Sequence:1100 (ANTI)
Sequence:1110 (XFER)	Different	Sequence:1110 (ACCUM)
Sequence:1120 (ACCUM)	Different	Sequence:1120 (COMP)
Sequence:1130 (COMP)	Different	Sequence:1130 (ACCUM)
Sequence:1140 (ACCUM)		
Sequence:1150 (SWITCH)		
Sequence:1160 (WITHIN)		
		Sequence:1200 (SWITCH)
		Sequence:1210 (WITHIN)
Sequence:1300 (COMP)	Equal	Sequence:1300 (COMP)
Sequence:1310 (AND)	Equal	Sequence:1310 (AND)
Sequence:1320 (SWITCH)	Equal	Sequence:1320 (SWITCH)
Sequence:1330 (PI)	Equal	Sequence:1330 (PI)
Each sequence is 100% of the original	Each vsl	Each sequence is 100% of the original

We are raising the DDC Bar

## New Trendlog Setup Report

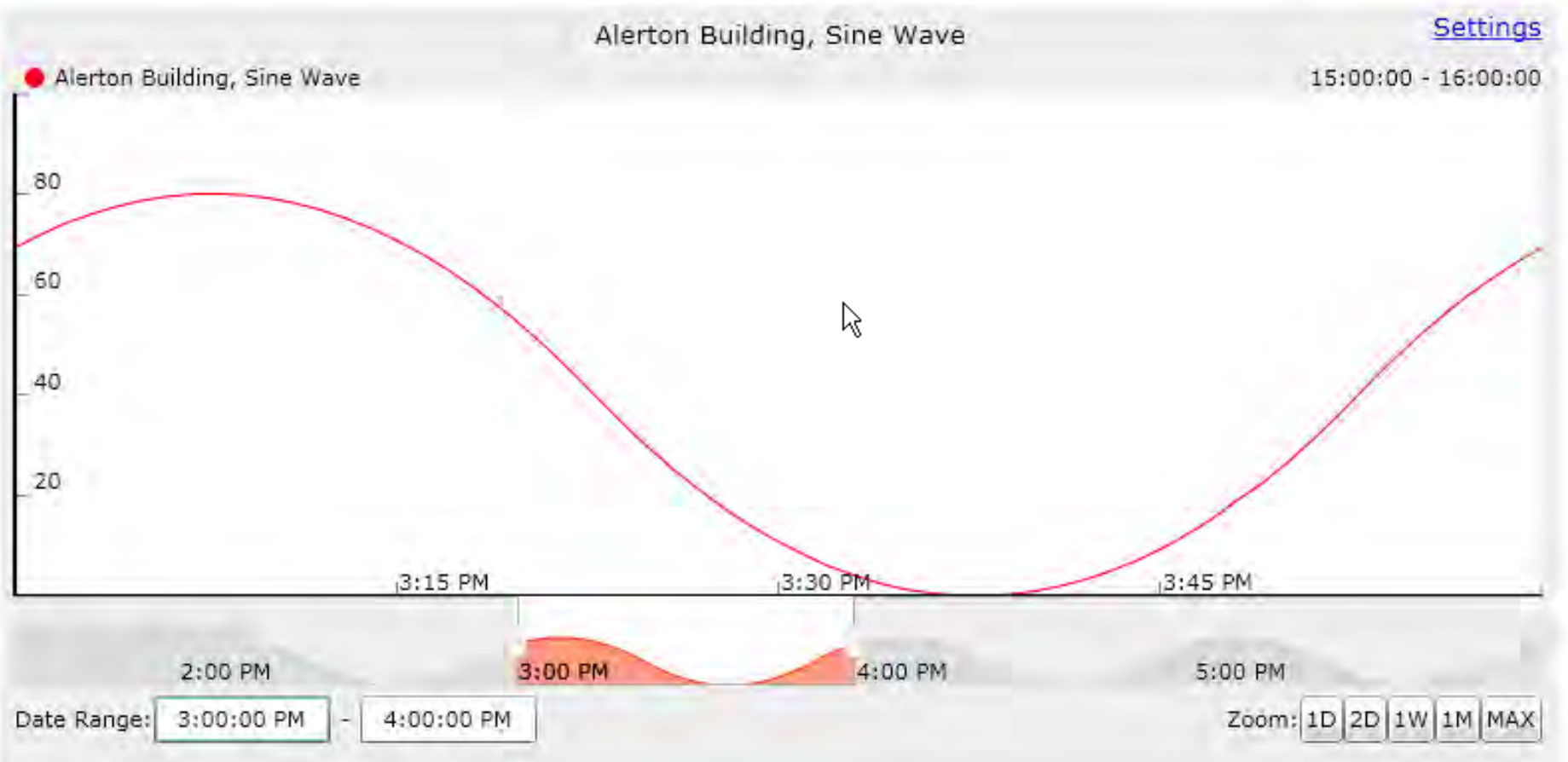
- ❖ New Commissioning Reports.
  - ❖ Zone Setup Report
  - ❖ Trendlog Report
  - ❖ Schedule Setup Report
  - ❖ Trendlog Handlers Report
  - ❖ Alarm Points Report
  - ❖ Alarm Handlers Report
  - ❖ Device List Report
  - ❖ Tenant Report
  - ❖ Demand Limiter Report
- ❖ User selectable options include text description, host, device instance, tenant name.
- ❖ Ability to sort, print, and export in multiple formats.

The screenshot shows the 'Trendlog Setup Report Configuration' dialog box. It contains several input fields and options:

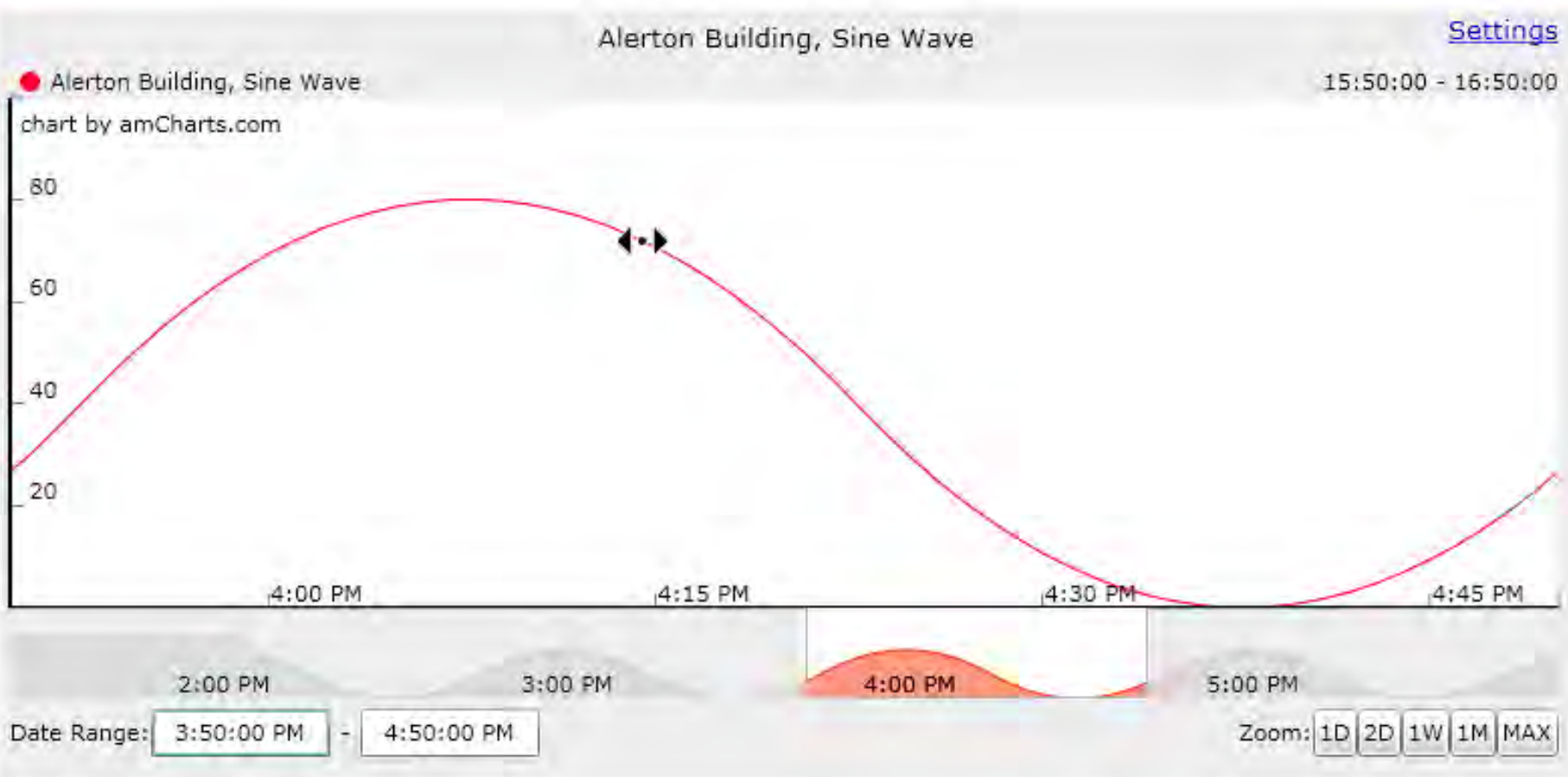
- Log Description:** A text box containing 'AHU'. Below it, a note reads: 'Include trendlogs with this substring in the log description. Leave blank to include trendlogs with any description.'
- Starting Host Device:** An empty text box.
- Ending Host Device:** An empty text box. Below it, a note reads: 'Include trendlogs that are hosted on devices within this range. Leave blank to include trendlogs on all host devices.'
- Starting Reference Device:** An empty text box.
- Ending Reference Device:** An empty text box. Below it, a note reads: 'Include trendlogs whose logged properties are within devices that are within this range. Leave blank to include trendlogs for all devices.'
- Report Type:** A dropdown menu with 'PDF' selected. Other options include 'Excel (complete)', 'Excel (Data Only)', 'HTML', 'RTF', and 'MS Word'.
- Sorting:** A section with a list of fields: 'Host Device', 'Source Device', and 'Log Description'. To the right are '>' and '<' buttons. Further right is a table with columns 'Sort By' and 'Sort Order'. The 'Sort By' column has a '#' symbol, and the 'Sort Order' column has a dropdown arrow.
- Buttons:** 'Generate Report' and 'Close' buttons are located in the top right corner.

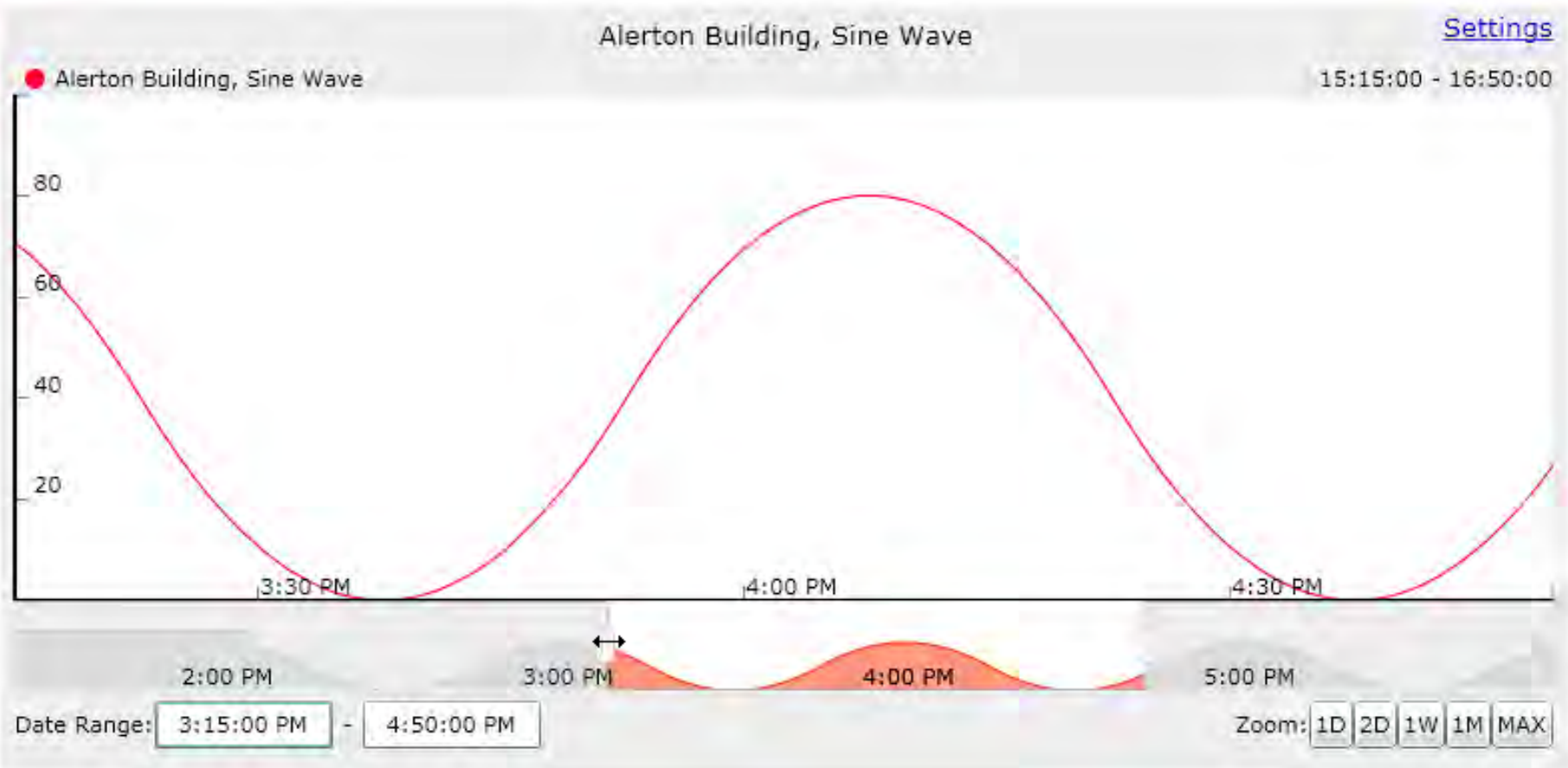


## Viewing one hour's worth of data



## Panning the viewable range





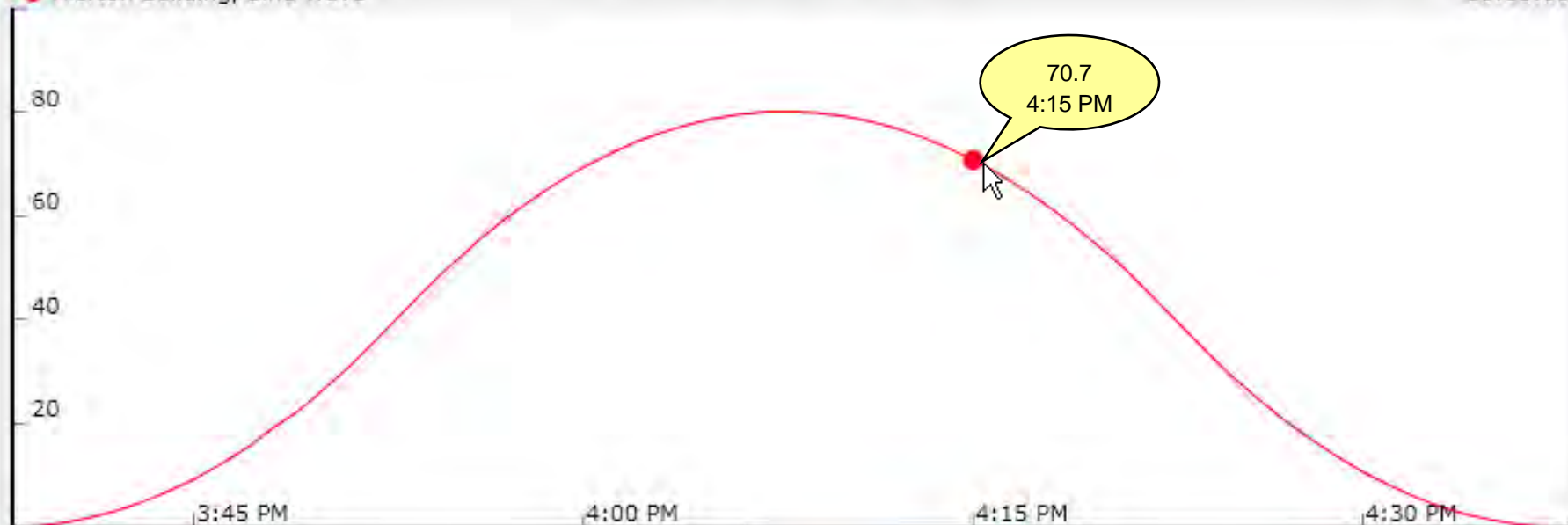


Alerton Building, Sine Wave

[Settings](#)

● Alerton Building, Sine Wave

16:15:00



2:00 PM

3:00 PM

4:00 PM

5:00 PM

Date Range:

3:38:00 PM

-

4:38:00 PM

Zoom:

1D

2D

1W

1M

MAX





Licensing



- ABS 3 will feature a keyless ignition
- No more USB keys!
- We will still offer upgrades and rebates from prior versions



# *Upgrade Your Customers*

- Revisit your install base for opportunity
- 2/3 of sites are small/medium
- Remote connectivity for everyone
- Competitive web solution
- Compelling upgrades

# BACK TO THE FUTURE



## *Dashboard*

ALERTON®



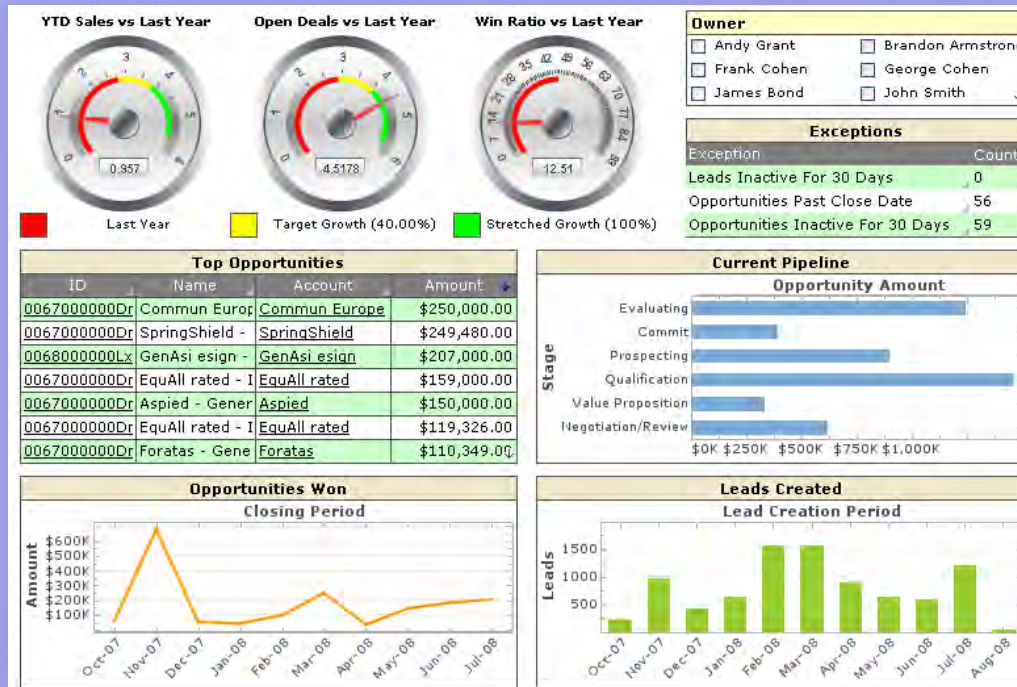
# *What is a dashboard?*







- A dashboard is a visual display of the most important information needed to achieve one or more objectives, consolidated and arranged on a single screen so the information can be monitored at a glance.





## Building Dashboard Types

- Green Education Dashboard
- Building Performance Dashboard
- Energy Manager's Tool Suite



# Dashboard Configurations

---



## Informational Billboard

- Rotating displays

## Interactive Kiosk

- Touchscreen

## Interactive Displays

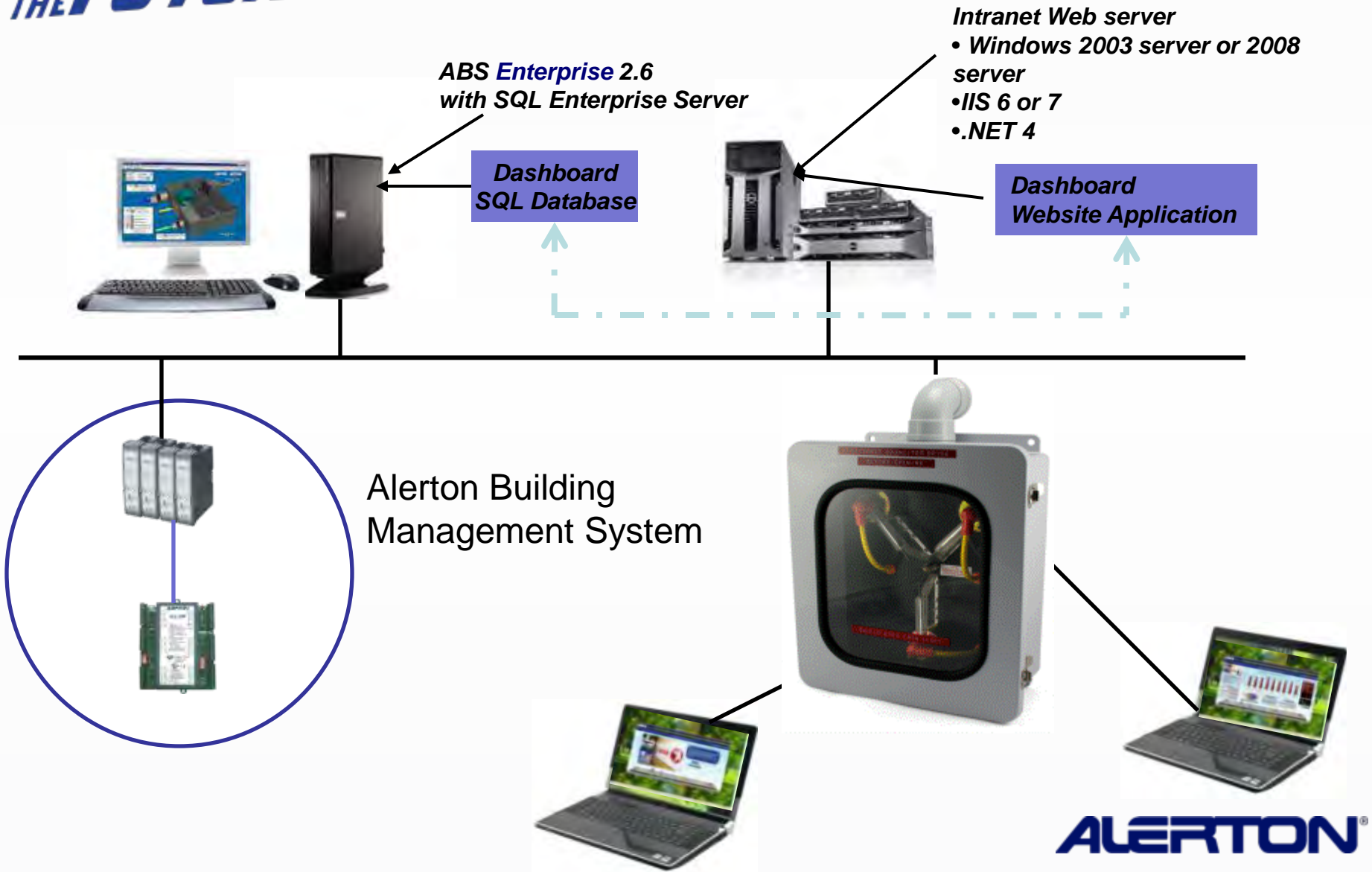
- Local Station
- WEB based



- Alerton Custom Dashboard Solution
  - Service provided by Alerton Engineering Services (AES)
- Options for:
  - Green Education Displays
  - Navigation/Energy Displays
  - Gauge, Graph & display options
  - Weather Web Integration
  - Gas, Water, Elec. Meters
  - Sub-metering
  - Tenant Sub-metering Reports
  - Weather Normalization
  - Custom report export to Excel or CSV
  - Selectable unit equivalent displays
  - Configuration screen for graphics and messaging



# Dashboard Architecture





# Differentiating Feature

# Benefit to the customer

**SaaS Free**

- Customer owns the data, no subscription fee

**Dashboard designed for main meters as well as submeters**

- Big Picture through main meters
- Granular awareness through – submeters (Ex: Lighting, Equipment load, Plug load etc.)

**Resource trends alongside Outside Temperature, RH and Enthalpy**

- Energy trend graphs alone don't mean anything.
- Combined picture of energy trends and OA temp/RH more importantly OA enthalpy gives a better picture

**Normalized weather consumption profile**

True measure of energy efficiency measures implemented

**Collection of equivalents**

- Wide collection of easily modifiable equivalents - are a powerful way of creating awareness

**Submeter based reports**

- Energy allocation based on submeters
- This is an emerging trend!

- Selling Dashboards
  - Targets opportunity segments in your existing customer base: LEED, Energy, Education
  - Identify/confirm customer need and goals
  - Develop performance metrics
  - Develop project scope
  - Complete Dashboard Quote Request
  - Contact RSM for proposal
  - Conduct customer demonstration
  - Build FUTURE business



# Dashboard Quote Request

Use Dashboard Quote Request form to define your customer's requirements

Alerton Dashboard Requirements - Complete and forward to Alerton Regional Sales Manager			
Alerton Dealer Name:		Date:	
Project Name:			
Number of Buildings:			
Type of Dashboard (Web, Kiosk, Billboard):			
Anticipated Number of Concurrent Users:			
Project Description:			
Category	Description	Qty	Comment
Public Education	Welcome page	1	Included
	Details Page	2	Included
	Green Facts	2	Included
	Floor Plans	3	Included
	Additional Static pages		Optional
Main Meters	Electrical Energy	1	Included
	Water	1	Included
	Gas	1	Included
	Total Energy	1	Included
Additional Main Meter	Electrical Energy		Optional
	Water		Optional
	Gas		Optional
Resource Trend Details	Electrical Energy	1	Included
	Water	1	Included
	Gas	1	Included
	Total Energy	1	Included
Sub meters	Energy	3	Included
	Water	3	Included
	Gas	3	Included
Additional Sub Meter	Energy		Optional
	Water		Optional
	Gas		Optional
Additional Consumables	Wind power		Optional
	Geothermal		Optional
	Solar		Optional
	Others		Optional
Special Features			
Weather Website Link	National Weather.com	1	Included
Weather Normalization	Main Meters	3	Included
Weather Normalization	Number of Meters		Optional
Other Normalization (per person etc)	Meters to Be Normalized		Optional
Comparison with Budget			Optional
Tenant billing based on Submeters	5 Tenants		Optional
	Additional Meters for billing		Optional
	Additional Tenants		Optional
Reports	Excel export of all the points in the dashboard		Included
	CSV File export		Included
	Weather Normalization reports		Optional
	Custom Report Template		Optional
Unit Equivalents Choices	Electricity	5	Included
	Water	5	Included
	Gas	5	Included
	Additional Equivalents		Optional



# BACK TO THE FUTURE



*Thank you*

**ALERTON®**